



CANMORE SUMMER THEATRE FESTIVAL

July 12-23, 2023 | Stan Rogers Stage

TICKETS: PineTreePlayers.com



PROGRAM

I WAS A RAT!

By Barbara Field
Story by Philip Pullman
Directed by Tyler McClaron

The poster for the play "I WAS A RAT!" features a central illustration of a black rat running across a series of concentric, multi-colored circles. The rat is carrying a pink heart in its mouth and a newspaper labeled "NEWS" in its paws. A yellow chain with a padlock is attached to its tail. The background is a vibrant orange.

Sense & Sensibility

By Kate Hamill
Novel by Jane Austen
Directed by Shelby Reinitz

The poster for the play "Sense & Sensibility" features a blue-toned illustration of two women in period dress, one on the left and one on the right, set against a background of intricate, swirling floral patterns. The title "Sense & Sensibility" is written in a large, elegant, white cursive font at the top.



AVENS GALLERY



101 - 710 Main Street, Canmore
(403) 678 - 4471
www.theavensgallery.com

I Was a Rat!

By Barbara Field based on the story by Philip Pullman

Produced by special arrangement with Plays for New Audiences.

Poor little Roger (even rat-boys need proper names) has nowhere to turn. Luckily, Bob the cobbler and his wife, Joan, have a warm home and welcoming hearts. If only Roger were able to stay out of trouble long enough to enjoy them. He even manages to get thrown in jail for being a dreaded sewer monster! Thank goodness, the Princess arrives in time to straighten the whole mess out, and return Roger to his new home and loving family.

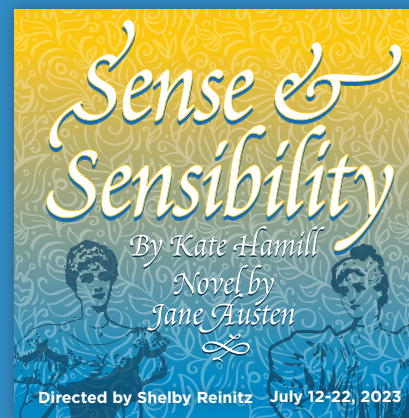
Content notes: Depictions of bullying, physical violence, and psychological distress.



Sense and Sensibility

by Kate Hamill based on the novel by Jane Austen

Presented by arrangement with Broadway Licensing, LLC, servicing the Dramatists Play Service collection. (www.dramatists.com)



A playful new adaptation of Jane Austen's beloved novel follows the fortunes (and misfortunes) of the Dashwood sisters—sensible Elinor and hypersensitive Marianne—after their father's sudden death leaves them financially destitute and socially vulnerable. Set in gossipy late 18th-century England, with a fresh female voice, the play is full of humour, emotional depth, and bold theatricality. Sense and Sensibility examines our reactions, both reasonable and ridiculous, to societal pressures. When reputation is everything, how do you follow your heart?

Content notes: Depictions of classism, bullying, illness, injury, and psychological distress; discussions of teenage pregnancy, grief and loss.

For a Spotify playlist of the music in Sense and Sensibility please visit <https://bit.ly/CSTF2023>



JOHNSTON CANYON
Lodge and Bungalows

1-888-378-1720
INFO@JOHNSTONCANYON.COM
JOHNSTONCANYON.COM

Open May to October - Market Cafe - Black Swift Bistra

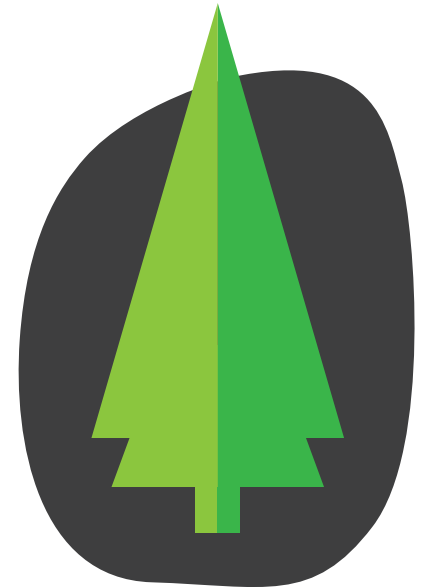
Call for Directors!

**SEEKING DIRECTORS & PLAYS
FOR PINE TREE PLAYERS' 2024 SEASON**

PLEASE SUBMIT BY AUGUST 15, 2023 PINETREEPLAYERS.COM



PLAY YOUR PART



VOLUNTEER

Volunteering with Pine Tree Players is a rewarding way to give back to the community and a chance to meet people and make new friends. Thank you to all current volunteers for your hard work!

AUDITION

Feel you have some talent to share? We invite you to come out and have fun by taking part in auditions! Visit pinetreeplayers.com/auditions for more info.

MAKE A DONATION

Pine Tree Players is a registered charity! To make a donation please visit pinetreeplayers.com/donations

SPONSOR US

Join the list of fine people and businesses who are "Playing their Part" in our community by supporting local theatre. A variety of sponsorship opportunities are available. Please talk to us about them.

CONTACT US

info@pinetreeplayers.com
www.pinetreeplayers.com

 [PineTreePlayers](https://www.instagram.com/PineTreePlayers)

 [PineTreePlayersCanmore](https://www.facebook.com/PineTreePlayersCanmore)



MEET THE CAST

I Was a Rat!

For bios please visit: <https://pinetreepayers.com/event/i-was-a-rat>



Anya Tkacz *she/her*
Dir. of Lost Children, Footman



Beren Burnett *he/him*
Charlie



Bradley Burden *he/him*
Newsboy



Christian Daly *he/him*
Scientist, Cyrus Sludge



Dyllan Parney *she/her*
Miss Cribbins



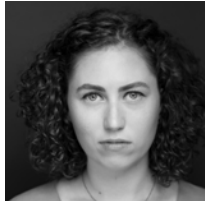
Ella Bagshaw *she/her*
Lawyer



Isis Burnett *she/her*
Billy



Jeremy White *he/him*
Sergeant Higgenbottom



Kelsey James *she/her*
Bob



Liberty Laferriere *she/her*
Professor Tapscrew



Lily Burden *she/her*
Philo. Royale, Prin. Aurelia



Liv Bourget *she/her*
Customer, Child in class



Meg Ohsada *she/her*
Judge



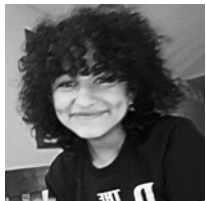
Rongqin Su *he/him*
Martin Tapscrew



Sherry Thompson *she/her*
Joan



Stella McDonald *she/her*
Hilda Bilge



Victoria Castillo
Matamoras *she/her*
Prison Head



Wren Achenbach *he/they*
Roger



Zaden Durupt *he/him*
Scientist's Assistant



CAM CLARK FORD

CANMORE

canmorecamclarkford.com

(403) 678-6200

FLOAT
CANMORE

FLOAT • SAUNA • MASSAGE
It's time to relax and rejuvenate!
[FLOATCANMORE.COM](http://floatcanmore.com)

OK TIRE®

Service, Repair and Tires.

107 ELK RUN BOULEVARD **403.678.4660**

MEET THE CAST

Sense and Sensibility

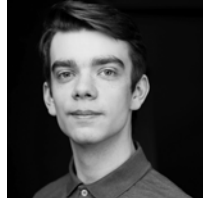
For bios please visit: <https://pinetreeplayers.com/event/sense-sensibility>



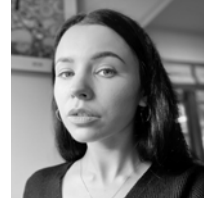
Bethany McMillan *she/her*
Gossip



Brian McDonald *he/him*
Col. Brandon



Christian Daly *he/him*
Edward, Doctor



Emily Pomeroy *she/her*
Elinor



Emma Mulheran *she/her*
Lucy Steel



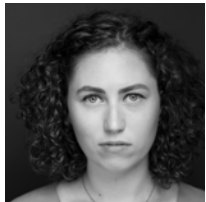
Emma Schneider
she/her or they/them
Anne, Thomas



Heidi Ward *she/they*
Mrs Jennings



Jeremy White *he/him*
Sir John, John Dashwood



Kelsey James *she/her*
Willoughby, Robert Ferrars



Kristin Slagorsky *she/her*
Gossip



Laura Hampshire *she/her*
Gossip



Liberty Laferriere *she/her*
Marianne



Lily Burden *she/her*
Margaret, Servant



Susan Hussey *she/her*
Mrs Dashwood,
Mrs Ferrars



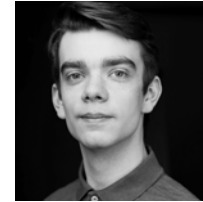
Tangle McClaron *she/her*
Fanny, Lady Middleton

MEET THE FESTIVAL PRODUCTION TEAM

For bios please visit <https://pinetreeplayers.com/event/sense-sensibility> and <https://pinetreeplayers.com/event/i-was-a-rat>



Anastasia St Amand *she/her*
Intimacy Director



Christian Daly *he/him*
Fight Captain



Cindy Kelly *she/her*
Stage Manager S&S



Jen Tweddell *she/her*
Producer



Katherina Joy *she/her*
Costume Designer



Katie Roscoe *she/her*
Assist. Stage Manager S&S



Lily Burden *she/her*
Dance Captain



Liv Witkowski *she/her*
Scenic Designer



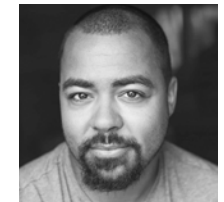
Mike Walters *he/him*
Stage Manager IWAR



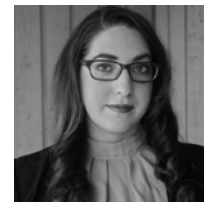
Norine Hori *she/her*
Choreographer S&S



Pam Milthorp *she/her*
Assistant Director S&S



Rico Pfeiffer *he/him*
Fight Director



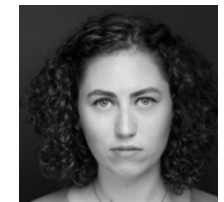
Shelby Reinitz *she/her*
Director S&S



Tangle McClaron *she/her*
Mentorship Coordinator



Tyler McClaron *he/him*
Director IWAR



Kelsey James *she/her*
Movement Director IWAR



THANK YOU!
DONORS, SPONSORS
AND SUPPORTERS

DONORS:



SPONSORS:



SUPPORTERS:

artsPlace
CanmoreAlberta.com
Costume Collective
Culligan Water
Jeremy Elbourne
JSF Audio
Laverne Anderson
Morpheus Theatre

Mountain FM
MP Chappeland
National Society of Intimacy Professionals
Principal Intimacy Professionals
Susan Monteith
The Pro Image
Linda Stenger and Connor McLaughlin



www.groverfroese.ca

CANMORE
100-709 8 St.
(403) 678-4225

BANFF
200-201 Bear St.
(403) 762-4206

FESTIVAL CREW

Mentor Actors	Christian Daly, Kelsey James, Liberty Laferriere
Props Sourcing	Katja Mogensen, Heidi Ward
Audio Technicians	Jon Frolick, Martin Finnerty
Lighting Technician	Martin Finnerty
Backstage Crew	Susan Hussey
Wardrobe Assistants	Trina Ramsey, Marsha Wright, Susan Poole
Set Construction & Decoration	Jeremy White, Victoria Castillo-Matamoros, Liv Witkowski, Lauren Thomas, Jen Tweddell
Photography	Burnett Photography
Graphic Design	Dark Horse Company
Social Media Marketing	Cheryl Naylor
Videographer	Martin Finnerty
Setup/Tear Down Crew	Michael Potter, Madelyn Adams, Jeremy White
Green Room	Laura Matamoros, Laura Hampshire, Sarah Burden, Shirleen Burnett, Jose Castillo, Robin Forsyth

With much appreciation to everyone who played their part in mounting this production.

ORIGIN[®] **AT**
Spring Creek
AN ACTIVE LIFESTYLE RESIDENCE



**Call 403-678-2288 or email
leasing@originspringcreek.ca to reserve
your spot or for more information**

808 Spring Creek Drive, Canmore

www.originspringcreek.ca